



## 2025 NISSAN LEAF SV PLUS - EPA Range up to 212 miles+++



Scan QR code for general  
model information & options

CORRECTED COPY

Standard Equipment Included at No Extra Charge

### MECHANICAL & PERFORMANCE

214HP (160kW) AC Synchronous Motor  
60 kWh Lithium-Ion Battery  
6.6 kW Onboard Charger  
Quick Charge Port  
Portable Charge Cable (120V/240V EVSE)  
Regenerative Braking System  
e-Pedal Mode & Hill Start Assist

### SAFETY & SECURITY

Nissan Safety Shield 360  
High Beam Assist  
Automatic Emergency Braking  
with Pedestrian Detection  
Lane Departure Warning  
Blind Spot Warning  
Rear Automatic Braking  
Rear Cross Traffic Alert

### COMFORT & CONVENIENCE

ProPILOT Assist w/ Steering Assist &  
Intelligent Cruise Control w/ Full Speed  
Range & Hold  
Intelligent Around View Monitor  
Rear Door Alert  
Nissan Intelligent Key® System w/  
Charge Port Door Release  
Front Heated Seats  
Tire Repair Kit

### AUDIO & INFOTAINMENT

NissanConnect® EV w/ Navigation & Services  
Apple Carplay®++  
Android Auto™++  
Nissan Door to Door Navigation w/ 3D  
Graphics & Satellite Imagery  
SiriusXM® Radio w/ Advanced  
Audio Features++  
SiriusXM® Radio w/ Advanced  
SiriusXM® Traffic & Travel Link++  
Sirius Eyes Free++  
Bluetooth® Hands-Free Phone System++  
Hands-Free Text Messaging Assistant  
Streaming Audio Via Bluetooth®++

NissanConnect® EV  
with Trial Access Included++

### EXTERIOR

17" Alloy Wheels  
Dual Power & Heated Outside Mirrors  
LED Headlights & Signature Daytime  
Running Lights  
Charge Port Light & Lock

++For More Information,  
See Dealer, Owner's Manual or  
[www.NissanUSA.com/connect/legal](http://www.NissanUSA.com/connect/legal)

+++Actual Range Will Vary With Trim  
Levels, Options, & Driving Conditions  
See Customer Disclosure Form For Details

Manufacturer's Suggested  
Retail Base Price: \$36,190.00

Options Included by Manufacturer	
Splash Guards	250.00
Two-Tone w/ Premium Paint	725.00
Carpeted Floor Mats & Cargo Area Mat	285.00
Rear Cupholders & Stash Tray	120.00
Kick Plates	160.00
Safety Kit	100.00
First-Aid Kit	
Emergency Kit	

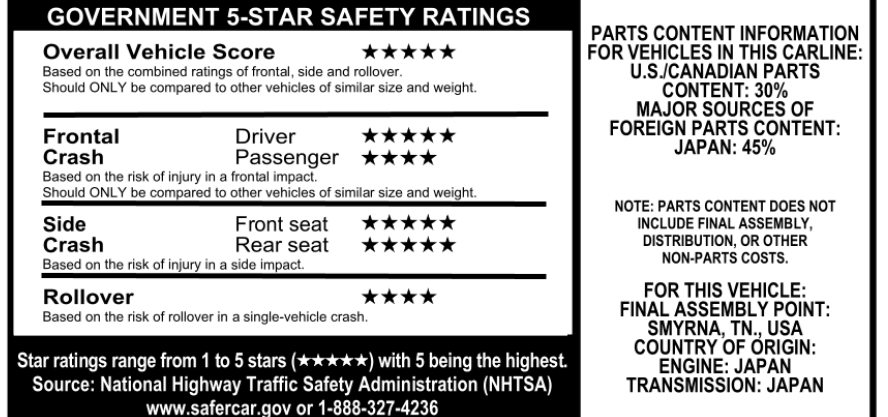
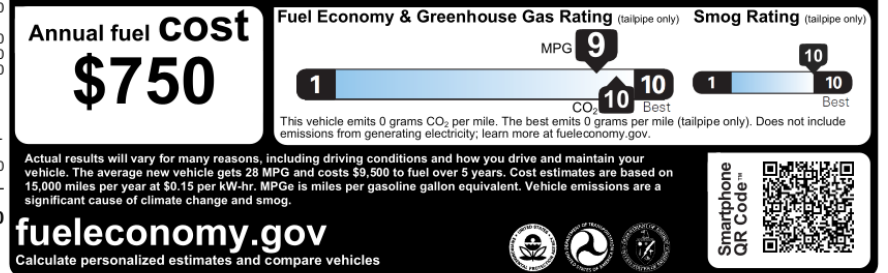
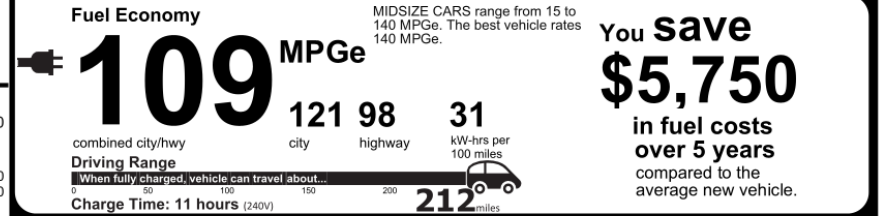
DESTINATION CHARGES 1,140.00

Total' \$38,970.00

\*Does not include dealer installed options and accessories, local taxes or license fees. This label has been applied pursuant to federal law. Do not remove prior to delivery to the ultimate purchaser.

\*\*Not actual Monroney Label. Provided for informational purposes only. Vehicle features, pricing and other information subject to change, may vary from actual vehicle content and/or Monroney label description. While Nissan makes reasonable efforts to ensure accuracy of information, Nissan is not responsible for changes, errors or omissions. See actual vehicle and/or verify information in question with your Nissan dealer.

## EPA Fuel Economy and Environment Electric Vehicle



This Vehicle qualifies for Nissan's <b>Security+Plus Extended Protection Plan</b>  The only service agreement backed by Nissan Extended Services North America! Ask your dealer for details, or call 1-800-NISSAN-1 for more information	<b>Dealer:</b> ALPINE NISSAN OF DENVER 2400 W 104TH AVE DENVER, CO 80234  <b>VIN:</b> 1N4CZ1CV3SC559212 <b>MDL:</b> 17115-559212 XBJ-G <b>OPT:</b> B-B93E09L92M93N92S92C03  <b>EXT:</b> 2T WHT BLK ROOF <b>INT:</b> BLACK <b>EMS:</b> 50 STATE EMISSIONS
--	---

Transport Method: TRUCK 2025012132736ZP6050